

DATA SHEET

Solbox Cloud Storage

By increasing demand for high-quality and rich-media content, there's no question that the amount of data we are producing is growing. From documents to pictures to emails to multimedia, our need for reliable and available storage is increasing exponentially. The service providers need enough fail-proof storage to support those demands without the inconvenience and cost of managing it.

The **Solbox Cloud Storage** is a virtualized storage, or "cloud storage," is a large, distributed storage cluster comprised of multiple storage units tied together through virtualized application. The power of this solution is in limitless expansion of storage space any time and real-time expansion in case of installing more physical storage with uninterrupted service. The **Solbox Cloud Storage** solution is built on a robust foundation proven in production environment and chosen by the top-tier operators to be served with large capacity of more than 3PB (Peta-Byte) for the past 7 years.

Benefits

- The **Solbox Cloud Storage**'s virtualization is the pooling of physical storages from multiple network storage devices into a single storage device theoretically and utilizing the capacity allocated real-time and easily.
- The **Solbox Cloud Storage** helps you reduce capital expenses through storage consolidation and improve operating expenses through automation, while minimizing revenue decrease by reducing both planned and unplanned downtime.
- You can deploy applications and desktops faster and more consistently to a wider variety of clients, lowering costs while improving service levels.
- The **Solbox Cloud Storage** provides networked online storage where data for CDN services are stored in virtualized pools of storage which are generally allocated to each CDN servers. This technology reduces the investment cost

and achieves high-performance, scalability, flexibility and affordability by using the cloud storage jointly.

- You can manage easily contents a variety of clients linked S/W applications like GUI, CLI(Command Line Interface)..
- Automated operations management for the new dynamic virtual infrastructures, so you can accelerate IT service delivery, improve operational efficiency, ensure compliance and reduce risk with minimum efforts.

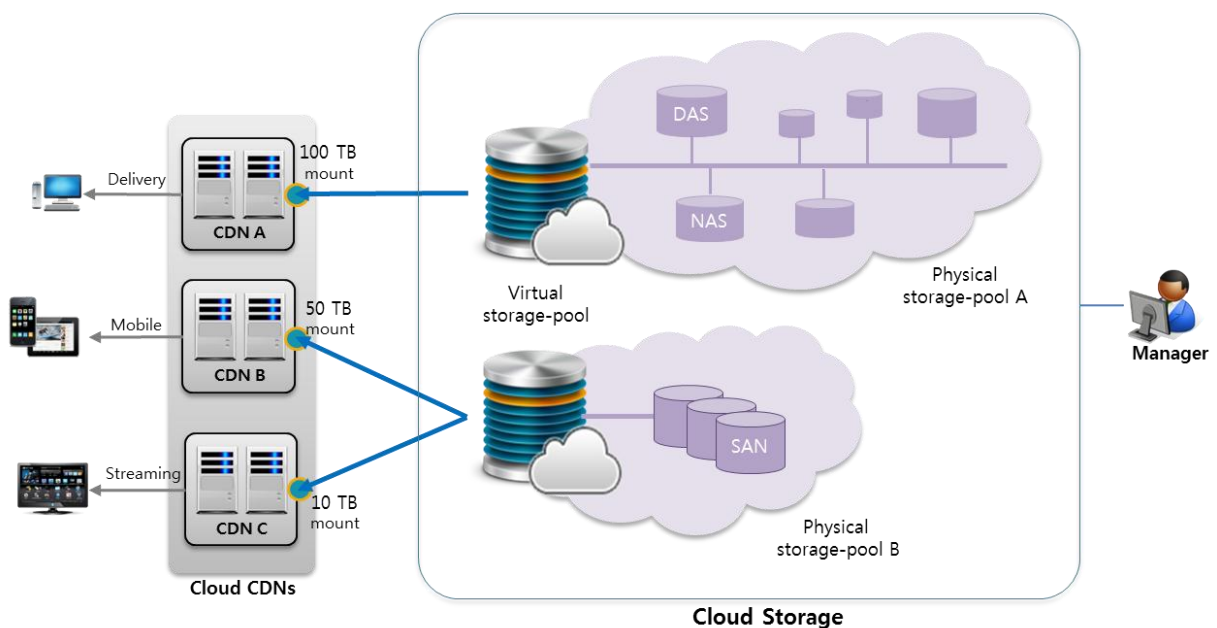
Features

- **Storage Virtualization**
With a virtualized storage layer, storage resources can be pooled so that many storage devices (including heterogeneous ones) appear as one, and data can move freely among devices.
- **Content Replication and Distributed Storage**
If one within the storages goes down, the service still stays intact and data is still available.
- **Real-time Allocation Control**
Adjust the storage allocation real-time and flexibly according to the service situation. And when you want to add more storage, you simply attach more disks to any part of the cloud (meaning any server that is configured as part of the virtualized storage). And down as usual, you can reduce the storage.
- **Intelligent Load Balancing**
Offload the traffic of storages effectively to prevent the service failure. Expected to increase in any specific data request, it notifies the change and offloads in advance to provide the stable service.
- **Enhanced Security**
Block the contents leakage more intensively, especially by hacking through the separate authentication appropriate to the customer's environment.
- **Auto Failure Detection and Recovery**
Monitor the failure in storage hardware and services, and report to the administrator automatically alarmed by any possible failures via SMS or e-mail. It reduces operation overhead and manages the service with minimum cost.
- **Rapid Response Time**
Provide the rapid response performance instantly requested by the users on the optimized system through the development and operation experiences over years.

Specification

Category	Description	
Features	Volume Number	<ul style="list-style-type: none"> Unlimited
	Max Capacity by Volume	<ul style="list-style-type: none"> Unlimited
	Capacity Change by Volume	<ul style="list-style-type: none"> Real-time instant expansion (Theoretical volume control on administrator mode)
	Network Bandwidth Control	<ul style="list-style-type: none"> Control by service volume Control by session
	Contents Replication	<ul style="list-style-type: none"> Replication latency by file Replica control by service volume
	Failure Detection and Recovery	<ul style="list-style-type: none"> Auto failure detection and Fail-over Real-time report and notice using SMS, E-mail
Additional	Client linked S/W	<ul style="list-style-type: none"> Provision of SDK (Software Development Kit) Support Windows Virtual Drive Mount - NetDrive(Desktop Edition) Mount by Server (Linux/Windows) - SolDrive(Server Edition) Provide SP-Console: GUI-based Application for Administration Support SDK for Android, iOS
	Security	<ul style="list-style-type: none"> User authentication according to the service policy

Diagram



Applicable Services

- End-to-end interactive contents like portal board, blog, mini homepage, UCC
- Upload/download service
- Sites to require the instant preparation for unexpected concurrent users' rapid growth
- Large-scale mail and backup service
- Web Storage, Broadcasting, CDN service